

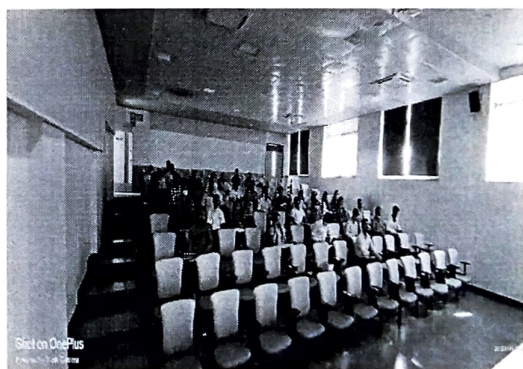
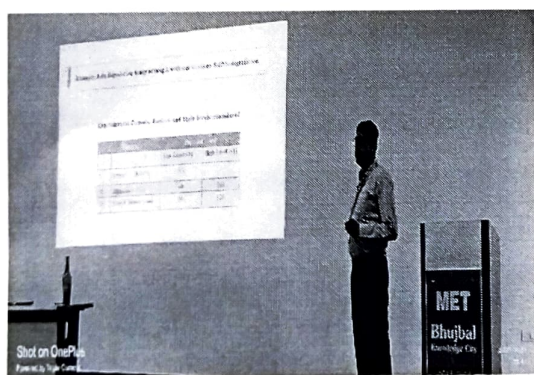
Report

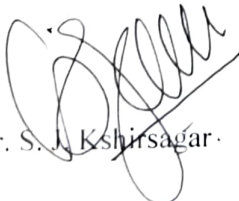
A lecture on the topic “**Basics of Optimization and Use of Different DoE Techniques in Pharmaceutical Research**” was organized on **25/11/2021**. The lecture was delivered by Dr. S. S. Sonawane, Associate Professor, MET’s Institute of Pharmacy, Nashik.

The objective of this lecture was to introduce the PG students to design of experiments; terminologies used; importance and judicial application various design in the development of pharmaceutical formulation; software’s used in the study and their handling. The concept was more simplified by taking case study in the lecture. Following points have been covered in his talk:

1. Introduction to DoE;
2. Preparation of experimental domain and matrix;
3. Evaluation of design by polynomial equation and
4. Introduction to Contour plot and its use.

Approximately 30 students currently working on development of formulation were present for the lecture.




Dr. S. S. Kshirsagar

PRINCIPAL
MET's Institute of Pharmacy
Adgaon, Nashik-3.

